

License Manager System
User Created Standards
Parameters
Setup Package
Backup Utility

Package - Untitled

Setup Package
Open An Existing Package

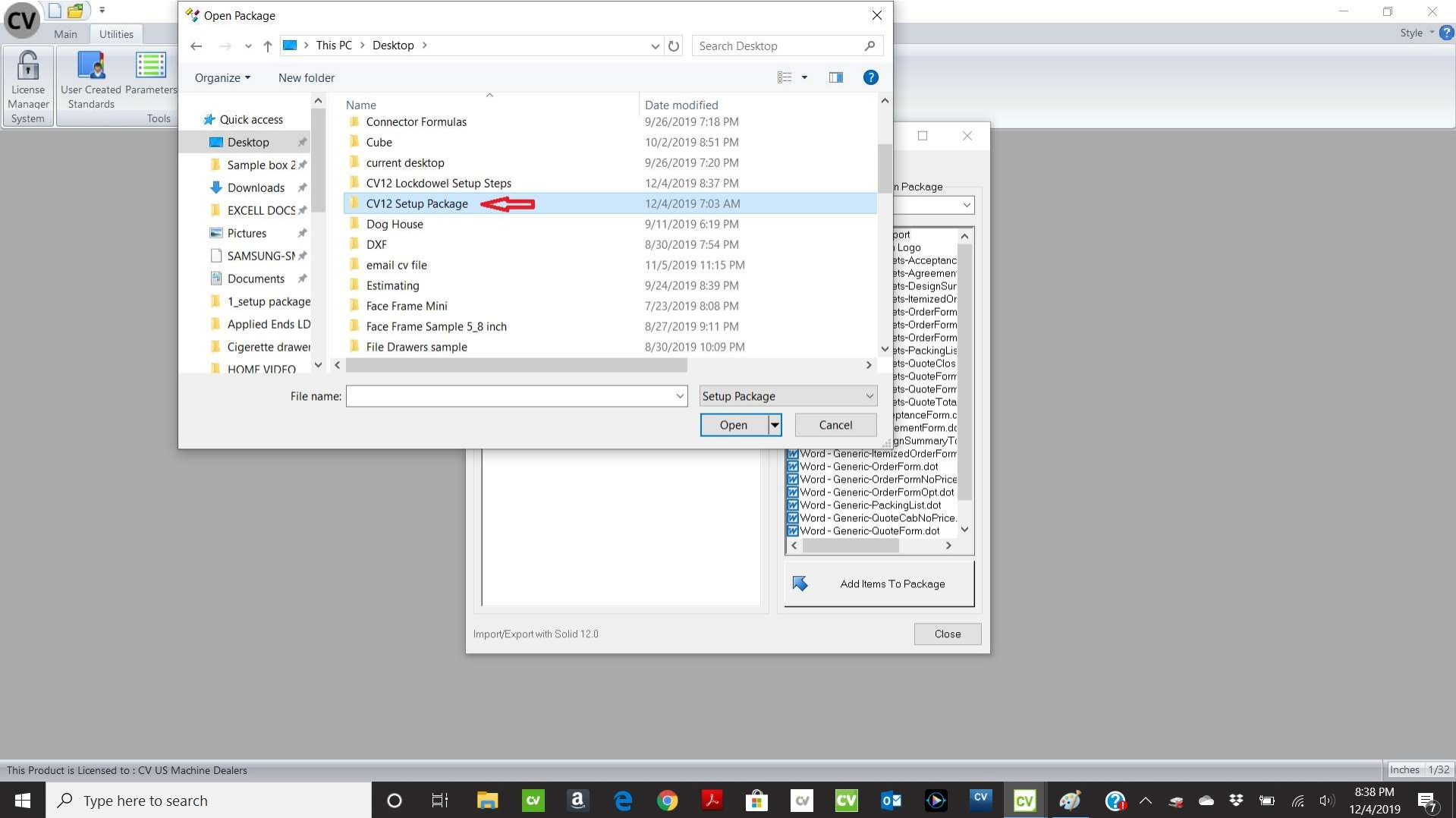
Select Items To Include In Package

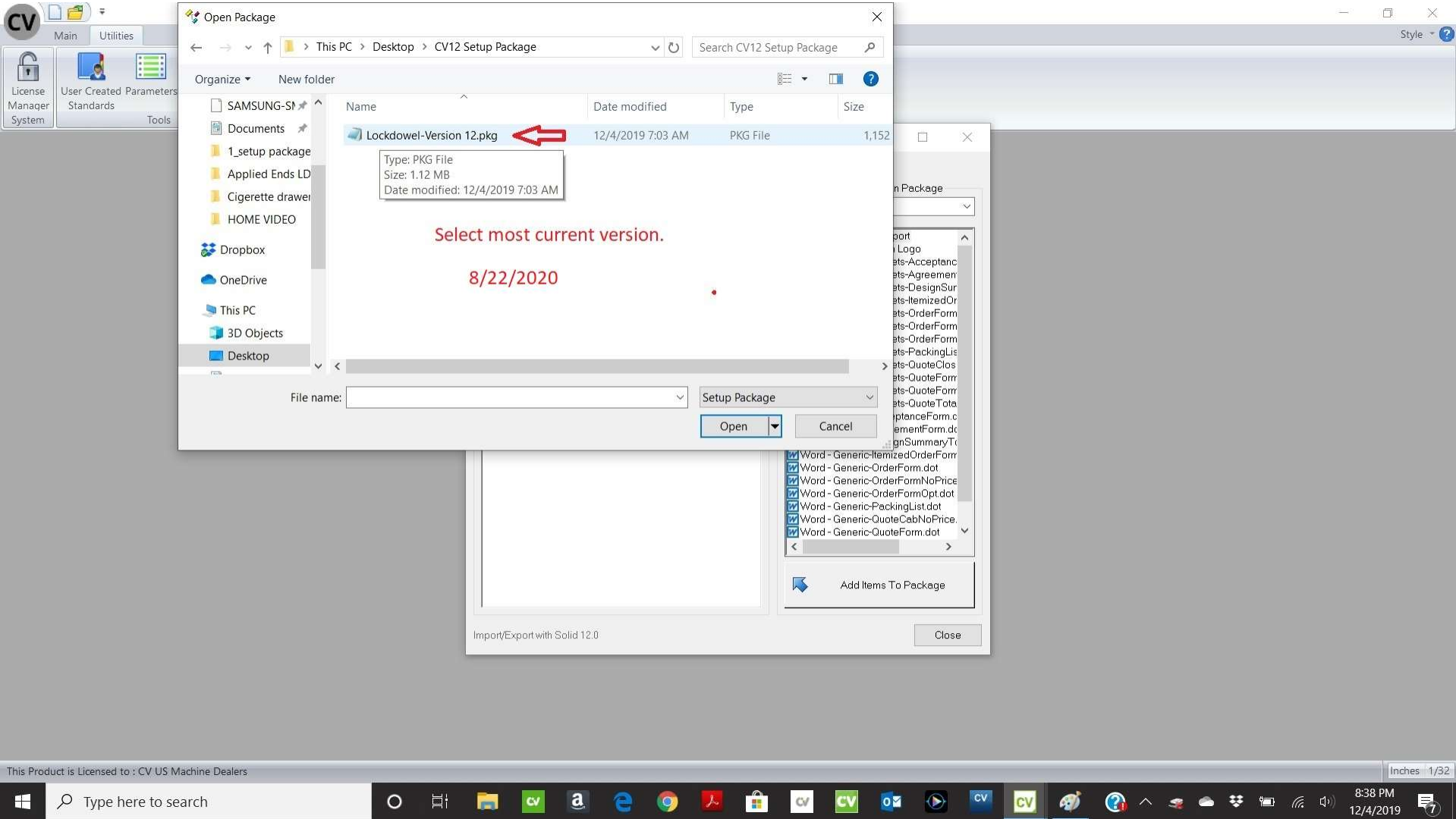
- Internal - Sample Report
- Internal - Sample with Logo
- Word - Generic Closets-Acceptanc
- Word - Generic Closets-Agreemen
- Word - Generic Closets-DesignSur
- Word - Generic Closets-ItemizedOr
- Word - Generic Closets-OrderForm
- Word - Generic Closets-OrderForm
- Word - Generic Closets-OrderForm
- Word - Generic Closets-PackingLis
- Word - Generic Closets-QuoteClos
- Word - Generic Closets-QuoteForm
- Word - Generic Closets-QuoteForm
- Word - Generic Closets-QuoteTota
- Word - Generic-AcceptanceForm.c
- Word - Generic-AgreementForm.dc
- Word - Generic-DesignSummaryTr
- Word - Generic-ItemizedOrderForm
- Word - Generic-OrderForm.dot
- Word - Generic-OrderFormNoPrice
- Word - Generic-OrderFormOpt.dot
- Word - Generic-PackingList.dot
- Word - Generic-QuoteCabNoPrice.
- Word - Generic-QuoteForm.dot

Import/Export with Solid 12.0

Add Items To Package

Close





select this icon.

Package - 12-2-2019 Lockdowel-Version 12

Setup Package

- 12-2-2019 Lockdowel-Version 12
 - User Created Standard: 12.2.2019 - 1-Channellock - Double On Ends
 - User Created Standard: 12.2.2019 - 2-Channellock - Double On Ends
 - User Created Standard: 12.2.2019 - Lockdowel Channellock
 - User Created Standard: 12.2.2019 - Lockdowel Connectors to Edge of Parts
 - User Created Standard: 12.2.2019 - Lockdowel HClip
 - User Created Standard: 12.2.2019 - Modifies Channellock Flip Front DWR Box
 - User Created Standard: 12.2.2019 - Modifies Channellock Std DWR Box
 - User Created Standard: 12.2.2019 - Modifies HClip Std DWR Box
 - User Created Standard: 12.2.2019 - Mods Parts for Channellock DWR Guides
 - User Created Standard: 12.2.2019 - Parametric Connectors to Edge of Parts
 - User Created Standard: 12.2.2019 - Renames Drawer Slabs
 - Tool: Shaped Router - CH_LOCK
 - Tool: Shaped Router - CH_LOCK_MINI
 - Roll Out: LD-CL Mini Std R/D
 - Drawer: LD-CL Flip Front DWR
 - Drawer: LD-CL Mini Std DWR
 - Drawer: LD-CL Std DWR
 - Drawer: LD-HC Std DWR
 - Parameter: LD-EClips Insert Tool ID (EC_TOOL_ID)
 - Parameter: LD-Lockdowel Mini Router Tool (MINI_CH_TOOL)
 - Parameter: LD-Lockdowel Router Tool ID (CH_TOOL_ID)
 - Parameter: LD-Nailer/Spring Pin Route Tool ID (NA_SP_TOOL_ID)
 - Parameter: LD-Show Connectors (SHOW_CONNECTOR)
 - Parameter: LD-Spring Pin Tool ID (SP_TOOL_ID)
 - Parameter: LD-Tool 1 Drill (TOOL_ONE)
 - Parameter: LD-Tool 2 Drill (TOOL_TWO)
 - Parameter: LD-Use Channellock Bit For Cleanout (CLEANOUT_ROUTE)
 - Material: Connector - LD 5mm Spring Pin-DWR Route
 - Material: Connector - LD 5mm Spring Pin-DWR Route-Flip

Select Items To Include In Package

Bid Reports

- Internal - Sample Report
- Internal - Sample with Logo
- Word - Generic Closets-Acceptanc
- Word - Generic Closets-Agreemen
- Word - Generic Closets-DesignSur
- Word - Generic Closets-ItemizedOr
- Word - Generic Closets-OrderForm
- Word - Generic Closets-OrderForm
- Word - Generic Closets-PackingLis
- Word - Generic Closets-QuoteClos
- Word - Generic Closets-QuoteForrr
- Word - Generic Closets-QuoteTota
- Word - Generic-AcceptanceForm.c
- Word - Generic-AgreementForm.dt
- Word - Generic-DesignSummaryTr
- Word - Generic-ItemizedOrderForm
- Word - Generic-OrderForm.dot
- Word - Generic-OrderFormNoPrice
- Word - Generic-OrderFormOpt.dot
- Word - Generic-PackingList.dot
- Word - Generic-QuoteCabNoPrice.
- Word - Generic-QuoteForm.dot

Add Items To Package

Close

Import/Export with Solid 12.0

Click on Hand Shake Icon

Package - Lockdowel-Version 12

Use the existing item
Overwrite the existing item

Setup Package

- Lockdowel-Version 12
 - User Created Standard: 12.2.2019 - 1-Channellock - Double On Ends
 - User Created Standard: 12.2.2019 - 2-Channellock - Double On Ends
 - User Created Standard: 12.2.2019 - Lockdowel Channellock
 - User Created Standard: 12.2.2019 - Lockdowel Connectors to Edge of Parts
 - User Created Standard: 12.2.2019 - Lockdowel HClip
 - User Created Standard: 12.2.2019 - Modifies Channellock Flip Front DWR Box
 - User Created Standard: 12.2.2019 - Modifies Channellock Std DWR Box
 - User Created Standard: 12.2.2019 - Modifies HClip Std DWR Box
 - User Created Standard: 12.2.2019 - Mods Parts for Channellock DWR Guides
 - User Created Standard: 12.2.2019 - Parametric Connectors to Edge of Parts
 - User Created Standard: 12.2.2019 - Renames Drawer Slabs
 - Catalog: Lockdowel
 - Connection: Blind Dado Assembly Screws
 - Connection: Blind Dado-1/4 deep
 - Connection Set: Blind Dado-Drilling
 - Connection: LD Channellock Balanced
 - Connection: LD Channellock F2B
 - Connection: LD HClip-Balanced
 - Connection: LD Mini Channellock B2F
 - Connection: LD Mini Channellock F2B
 - Connection: LD Mini Channellock-DWR Back
 - Connection: LD Mini Channellock-DWR Sub Front
 - Connection: LD Mini Channellock-R/O Side
 - Connection: LD Spring Pin Balanced
 - Connection: Nailer Through Holes
 - Connection: Nailer/Back Through Bore
 - Connection Set: Shelves to 1/4 Back
 - Drawer: LD-CL Flip Front DWR
 - Drawer: LD-CL Mini Std DWR

Import/Export with Solid 12.0 Close

Package - Lockdowel-Version 12

● Use the existing item
● Overwrite the existing item

Setup Package

- Lockdowel-Version 12
 - User Created Standard: 12.2.2019 - 1-Channellock - Double On Ends
 - User Created Standard: 12.2.2019 - 2-Channellock - Double On Ends
 - User Created Standard: 12.2.2019 - Lockdowel Channellock
 - User Created Standard: 12.2.2019 - Lockdowel Connectors to Edge of Parts
 - User Created Standard: 12.2.2019 - Lockdowel HClip
 - User Created Standard: 12.2.2019 - Modifies Channellock Flip Front DWR Box
 - User Created Standard: 12.2.2019 - Modifies Channellock Std DWR Box
 - User Created Standard: 12.2.2019 - Modifies Channellock DWR Guides to Edge of Parts
 - User Created Standard: 12.2.2019 - Modifies Channellock DWR Guides to Edge of Parts
 - User Created Standard: 12.2.2019 - Modifies Channellock DWR Guides to Edge of Parts
 - User Created Standard: 12.2.2019 - Modifies Channellock DWR Guides to Edge of Parts
 - User Created Standard: 12.2.2019 - Modifies Channellock DWR Guides to Edge of Parts
 - Catalog: Lockdowel
 - Connection: Blind D
 - Connection: Blind D
 - Connection: Set: Blind D
 - Connection: LD Che
 - Connection: LD Che
 - Connection: LD HCl
 - Connection: LD Mini
 - Connection: LD Mini Channellock F2B
 - Connection: LD Mini Channellock-DWR Back
 - Connection: LD Mini Channellock-DWR Sub Front
 - Connection: LD Mini Channellock-R/O Side
 - Connection: LD Spring Pin Balanced
 - Connection: Nailor Through Holes
 - Connection: Nailor/Back Through Bore
 - Connection Set: Shelves to 1/4 Back
 - Drawer: LD-CL Flip Front DWR
 - Drawer: LD-CL Mini Std DWR

i Import Complete

Import/Export with Solid 12.0

Click OK, then Close.

CV Main Style ?

Part Material Material Schedules Intelli-Joint Machine Tool Molding Profile Assembly Connections Help

Catalogs Construction Help

Material
Edit Materials

Click on Main
Click on Material

This Product is Licensed to : CV US Machine Dealers

Inches 1/32

Type here to search

Windows taskbar icons: File Explorer, CV, Amazon, Edge, Chrome, PDF, Store, CV, CV, Mail, Play, CV, CV, Settings, Network, Volume, 8:47 PM 12/4/2019

CV Material Manager

Main

Return New Copy Alias Delete Properties Finish Finish Type Finishes Texture Vendor Managing

ID	Name	Description	Type	Unit Of Issue	Default Vendor	Default Cost	Sell Price	Default Markup	Sales Tax	Default Tax Ra...	Waste	Estimate
----	------	-------------	------	---------------	----------------	--------------	------------	----------------	-----------	-------------------	-------	----------

Bandaging
Board Stock
Caster
Connector
Drawer Guide
Hinge
Hinge Plate
Laminate
Leg
Leg Leveler
Miscellaneous
Molding
Panel Stock
Pull
Rod
Sliding Door Rail
Sliding Door Roller
Wire Basket
Deleted
Lockdowel-Version 12.plg
Lockdowel Connectors

Click on + sign, drag "Lockdowel Connectors" subfolder up and into Parent Folder "Connector"

then drag Lockdowel drawer guide into Parent Folder.

Ready

Inches 1/32

Type here to search

8:49 PM
12/4/2019

Main

Return New Copy Alias Delete Properties Finish Finish Type Texture Vendor

Home Materials Finishes Managing

ID	Name	Description	Type	Unit Of Issue	Default Vendor	Default Cost	Sell Price	Default Markup	Sales Tax	Default Tax Ra...	Waste	Estimate
1371	Assembly Screw-BackNailer	Assembly Screw	Connector	Each		0.00	0.00	0.0%	<input type="checkbox"/>	0.0%	0.0%	<input type="checkbox"/>

Bandaging

- Board Stock
- Caster
- Connector
- Drawer Guide
- Hinge
- Hinge Plate
- Laminate
- Leg
- Leg Leveler
- Miscellaneous
- Molding
- Panel Stock
- Pull
- Rod
- Sliding Door Rail
- Sliding Door Roller
- Wire Basket
- Deleted
- Lockdowel-Version 12.pkg
- Lockdowel Connectors

Drop subfolder on top of Connector, click Yes to move item.

Material Manager

Are you sure you want to move this item?

Don't Show this Message again

Yes No

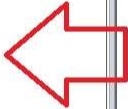
click + sign to expand. Move Drawer Glides up to Parent Folder.

Main

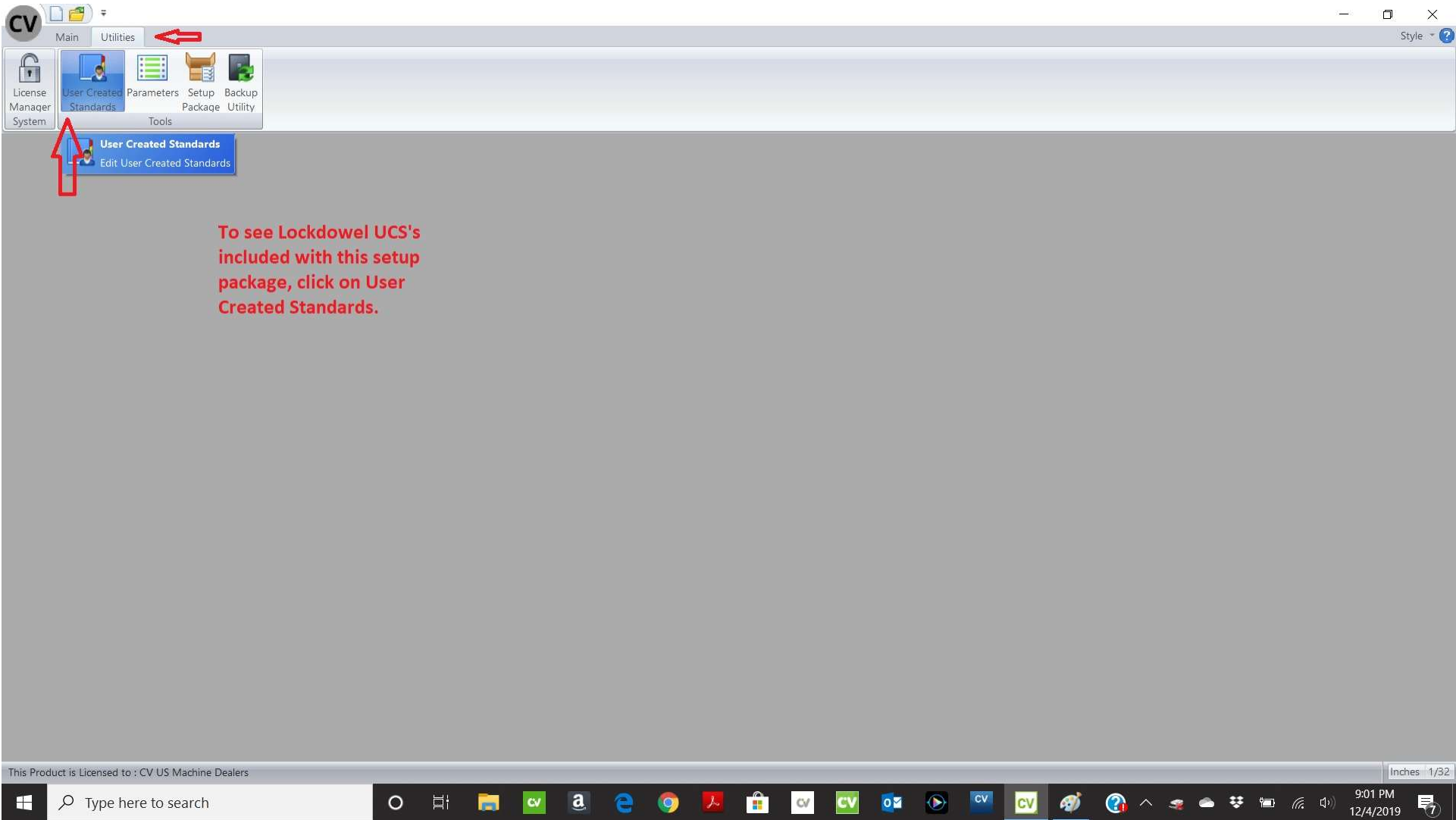
Return New Copy Alias Delete Properties Finish Finish Type Finishes Texture Vendor Managing

ID	Name	Description	Type	Unit Of Issue	Default Vendor	Default Cost	Sell Price	Default Markup	Sales Tax	Default Tax Ra...	Waste	Estimate
----	------	-------------	------	---------------	----------------	--------------	------------	----------------	-----------	-------------------	-------	----------

- Banding
- Board Stock
- Caster
- Connector
- Lockdowel Connectors
 - Lockdowel
 - Spring Pin
 - HClip
 - Channelock
- Drawer Guide
- Hinge
- Hinge Plate
- Laminate
- Leg
- Leg Leveler
- Miscellaneous
- Molding
- Panel Stock
- Pull
- Rod
- Sliding Door Rail
- Sliding Door Roller
- Wire Basket
- Deleted
- Lockdowel-Version 12.pkg



It should look like this now.



To see Lockdowel UCS's included with this setup package, click on User Created Standards.

Start of Lockdowel UCS's		Yellow light bulb indicates :ON"	
18	8.21.2020 - 1-Channellock - Double On Ends	Lockdowel Cabinet to Cabinet or Applied End Panel	Board
19	8.21.2020 - 2-Channellock - Double On Ends	Lockdowel Cabinet to Cabinet or Applied End Panel	No Intelli-Joint
20	8.21.2020 - Lockdowel Channellock	Channelock Construction	Top
21	8.21.2020 - Lockdowel HClip	HClip Construction	Hardware Connector
22	8.21.2020 Add Back Stiffener 1_4 Backs N Nailers	Add Back Stiffener for 1/4 Backs	45 Corner Hinge
23	8.21.2020 - E3259BM Lockdowel Channelock Ver 1	Channelock Construction with E3259BM connectors	Top
24	8.21.2020 Manual LD Connectors to Edge of Parts	Enter connector offset in Parameters Table M_CON_OFFSET	Hinge
25	8.21.2020 Manual Parametric Conn to Edge of Parts	Enter connector offset in Parameters Table M_CON_OFFSET	Hinge
26	8.21.2020 - Mods Parts for Channelock DWR Guides	Channelock Drawer Guide Corrections	Dado
27	8.21.2020 - Renames Drawer Slabs	Modifies Door Slab Names	Door Slab
28	8/21/2020 LD HCip DWR_RO 8mm_9.5mm	HClip Drawer and Roll Out	Hardware Connector
29	8/21/2020 LD CL Standard DRW_RO 1 9.5mm only	Standard Channelock Drawer and Rollout Construction	Hardware Connector
30	8.21.2020 LD CL Standard DRW_RO 2 add Slab 9mm	***OPTIONAL*ADD LOCKDOWEL FOR SLAB CNC FRONT**	45 Corner Hinge
31	8.21.2020 - LD Mini CL 16mm Flip Front DRW_RO	Mini CL 16mm Flip Drawer and Rollout Construction	No Intelli-Joint
32	8.21.2020 OPTIONAL Uppers *French Cleat Notches	**OPTIONAL HANGING CLEAT ROUTE**	Dado
33	8.21.2020 OPTIONAL Base *French Cleat Notches	**OPTIONAL HANGING CLEAT ROUTE**	Dado
End of Lockdowel UCS's			



CV Assembly Manager

Main

Return Schedule Modify

Home

Style

New Copy Rename Delete Parameters

Assembly

- 32mm
- 32mm
- Face Frame
- Frame Overlay
- Frameless
- LD-CL Slide-In Back**
- LD-CL Slide-In Back/SP NA
- LD-CL Slide-In Full Back
- LD-HC Captured Back
- LD-HC Slide-In Back
- LD-HC Slide-In Full Back
- Planit Closet
- Sample Closet

OK Cancel

CL = Channellock, HC = HClip

Most Used

Full Back = 3/4" Back Thickness Typical.

CV Assembly Manager

Main
Return Schedule Modify
Home Tools

Style
New Copy Rename Delete Parameters

Schedule

- Blum Tandem
- Blum Tandem Interior
- LD-CL Flip Front DWR
- LD-CL Flip Front R/O
- LD-CL Mini Std DWR
- LD-CL Mini Std R/O
- LD-CL Std DWR
- LD-CL Std R/O
- LD-HC Std DWR
- LD-HC Std R/O
- Roll Out
- System Drawer

OK Cancel



CL=Channellock, HC=HClip



Lockdowel Drawer and Roll Out Assembly





Tool Catalog - CH_LOCK

assign tool to your CNC

CH_LOCK

General	
Machine	Any
Name	CH_LOCK
Tool Number	104
Height Offset ID	104
Tool ID	53
Tool Size	
Diameter	8
Work Depth	30
Movement	
Output Path	Center Line
Rotate Clockwise	Yes
Max Depth Per Pass	12
Feed Rate	
1/4 Feed Rate	8000.000
3/4 Feed Rate	8000.000
Descent Rate	3000.000
Spindle Speed	18000.000
Cad	
Pen	1 - Red
Layer	

mm 1.5

Close

Write down your Tool ID Number

Select Your Tool Feed Rates

Tool Catalog - 1/4_DS

Any All

1/4_DS

General	
Machine	Multiple
Sheet - Biesse Nest	Yes
Part - Biesse Parts	Yes
Part - dxf	Yes
Edge - OMAL Lockdown	No
Name	1/4_DS
Tool Number	1
Height Offset ID	1
Tool ID	11

Tool Size	
Diameter	6.5
Work Depth	51

Tool Selection	
Allow Auto Select	Yes
Outline Tool	No
Down Shear	Yes
Up Shear	No

Movement	
Output Path	Offset / Tool Comp
Rotate Clockwise	Yes
Max Depth Per Pass	12.5

mm 1.5

Close

You will need this ID also. Your Tool ID

Prompt	Parameter	Type	Value	Class	Style
Connector Offset	CON_OFFSET	Measurement	imp(9.5)	Job	Note
EClips Insert Tool ID	EC_TOOL_ID	Integer	0	Job	Note
Lockdowel Mini Router Tool	MINI_CH_TOOL	Integer	70	Job	Note
Lockdowel Mini32 router Tool	MINI32_CH_TOOL	Integer	74	Job	Note
Lockdowel Router Tool ID	CH_TOOL_ID	Integer	53	Job	Note
Nailer/Spring Pin Route Tool ID	NA_SP_TOOL_ID	Integer	11	Job	Note
Show Connectors	SHOW_CONNECTOR	Boolean	1	Job	Attribute
Spring Pin Tool ID	SP_TOOL_ID	Integer	0	Job	Note
Tool 1 Drill	TOOL_ONE	Integer	0	Job	Note
Tool 2 Drill	TOOL_TWO	Integer	0	Job	Note
Use Channellock Bit For Cleanout	CLEANOUT_ROUTE	Boolean	1	Job	Note
Wall Hanging Cleat Notch	RM_HANG_CLEAT	Boolean	1	Job	Attribute



Enter Your Tool ID numbers

Value 1 to use same bit for double pass on Channellock Route.

53 was my Channellock Router Bit. 11 was my 1/4 DS Router Bit. Yours may be different.

Solid Ultimate

License Manager System
User Created Parameters Standards
Tools
Setup Package Utility

CV System Parameters updated for 8_22_2020

Prompt	Parameter	Type	Value	Class	Style
Connector Offset	M_CON_OFFSET	Measurement	imp(9.5)	Job	Note
LD-EClips Insert Tool ID	EC_TOOL_ID	Integer	0	Job	Note
LD-Lockdowel Mini Router Tool	MINI_CH_TOOL_ID	Integer	76	Job	Note
LD-Lockdowel Mini32 Router Tool	MINI32_CH_TOOL_ID	Integer	78	Job	Note
LD-Lockdowel Router Tool ID	CH_TOOL_ID	Integer	53	Job	Note
LD-Naller/Spring Pin Route Tool ID	NA_SP_TOOL_ID	Integer	11	Job	Note
LD-Show Connectors	SHOW_CONNECTOR	Boolean	1	Job	Attribute
LD-Spring Pin Tool ID	SP_TOOL_ID	Integer	0	Job	Note
LD-Tool 1 Drill	TOOL_ONE	Integer	0	Job	Note
LD-Tool 2 Drill	TOOL_TWO	Integer	0	Job	Note
LD-Use Channelock Bit For Cleanout	CLEANOUT_ROUTE	Boolean	1	Job	Note
Wall Hanging Cleat Notch	RM_HANG_CLEAT	Boolean	1	Job	Attribute

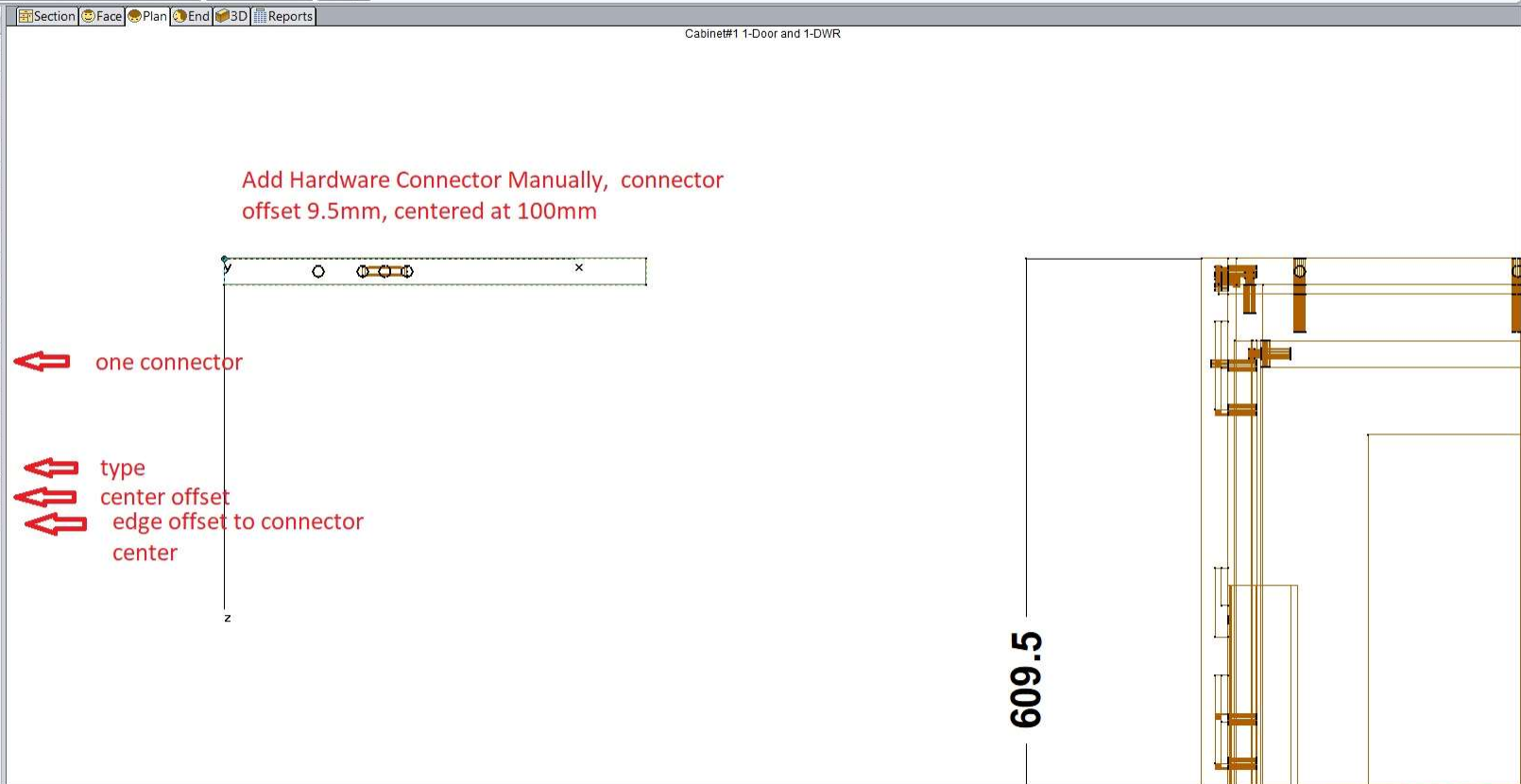
Delete Delete All Close

← For Manually Adding Connectors with Attributes.

CV Main Utilities

Return Home | Clipboard Edit | Window Out All Zoom | Standard View | Measure Tools | Object Tree Tools | Help

Panel	
Position	
Left/Right	-706
Up/Down (Y)	411.5
In/Out (Z)	0
Size	
Length (DY)	305
Width (DX)	305
Thickness (DZ)	19 Σ
Radius	
Radius Y	0
Rotation	
Rotate Part By	0.0
Attributes	
Add Hardware Connectors?	01
Add Parametric Connectors?	0
Hardware 01 Edge Number	01
Hardware 01 Edge/Face	Edge
Hardware 01 Flip	False
Hardware 01 Type	HClip W/8mm Sp
Hardware 01 X Position	9.5
Hardware 01 Y Position	100



CV System Parameters

Prompt	Parameter	Type	Value	Class	Style
Connector Offset	M_CON_OFFSET	Measurement	imp(9.5)	Job	Note
LD-EClips Insert Tool ID	EC_TOOL_ID	Integer	0	Job	Note
LD-Lockdowel Mini Router Tool	MINI_CH_TOOL_ID	Integer	0	Job	Note
LD-Lockdowel Mini32 Router Tool	MINI32_CH_TOOL_ID	Integer	0	Job	Note
LD-Lockdowel Router Tool ID	CH_TOOL_ID	Integer	0	Job	Note
LD-Naller/Spring Pin Route Tool ID	NA_SP_TOOL_ID	Integer	0	Job	Note
LD-Show Connectors	SHOW_CONNECTOR	Boolean	1	Job	Attribute
LD-Spring Pin Tool ID	SP_TOOL_ID	Integer	0	Job	Note
LD-Tool 1 Drill	TOOL_ONE	Integer	0	Job	Note
LD-Tool 2 Drill	TOOL_TWO	Integer	0	Job	Note
LD-Use Channelock Bit For Cleanout	CLEANOUT_ROUTE	Boolean	1	Job	Note
Wall Hanging Cleat Notch	RM_HANG_CLEAT	Boolean	1	Job	Attribute

Delete Delete All Close

Default connector center value.
for manually add connector.