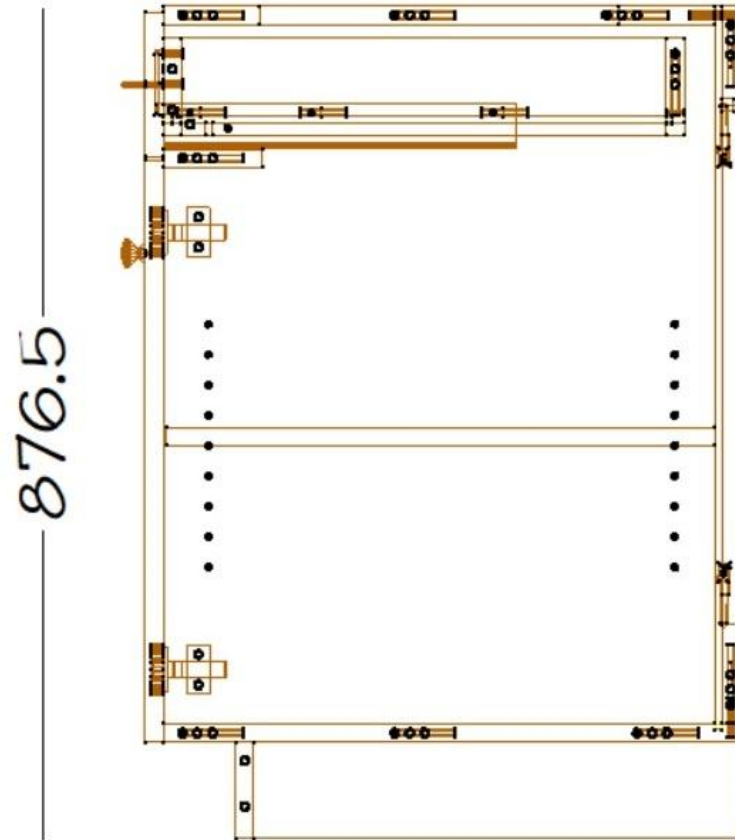


Channelock, parts slide from back to front, except partitions. 1/4 back slides from top to bottom, secure with spring pin or screw(optional) through top nailer into back edge of top.



Nailer hand routes and back stiffener route also optional, see Public Variables in UCS.

Job Properties



Channelock w Nailers



Construction | Materials | Hardware | Doors | Flutes | Layout



Job



Room



Cabinet



Closet



Counter Top



Molding

Cabinets

LD-CL Slide-In Back



Modify for this Job

Drawer Box

LD-CL Flip Front DWR



Modify for this Job

Roll Outs

LD-CL Flip Front R/O



Modify for this Job

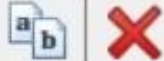
OK

Cancel

Job Properties



Channelock w Nailers



Job



Room



Cabinet



Closet



Counter Top



Molding

Construction | **Materials** | Hardware | Doors | Flutes | Layout

Base Material Schedules

Standard 3/4 Mel_1/4 Back

Exposed Interior 3/4 Mel_1/4 Back

Upper Material Schedules

Standard 3/4 Mel_1/4 Back

Exposed Interior 3/4 Mel_1/4 Back

Drawer Box 3/4 2s Melamine

Roll Out 3/4 2s Melamine

OK

Cancel