

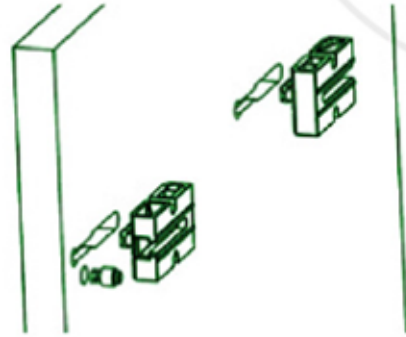
# LD Spacer

## Drawer Slide Spacer

Drawer slide spacers for face frame cabinets. Can only be used with Lockdowel undermount and sidemount drawer slides.

### SPECIFICATION

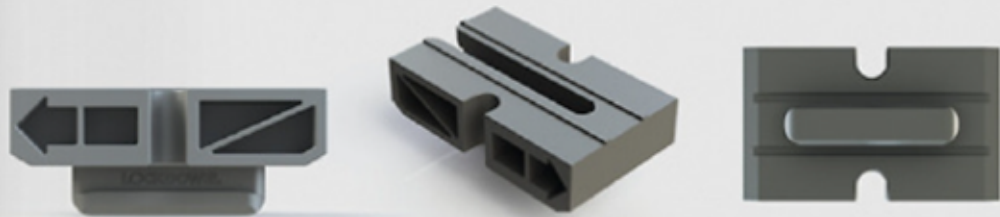
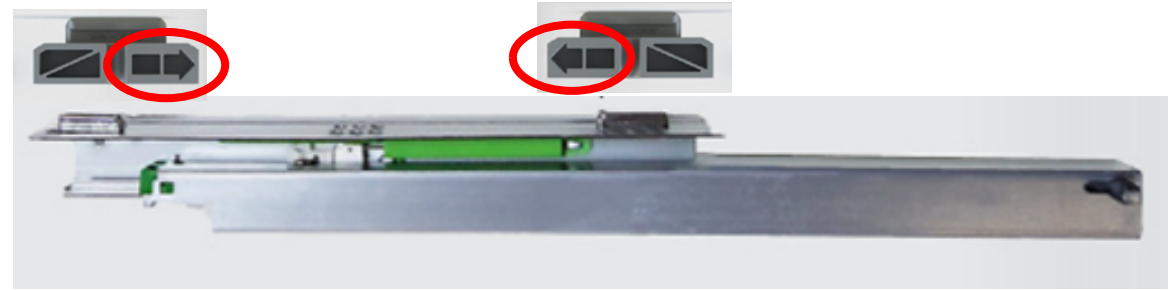
- Pull Force: 70+ lbs.
- Material: Nylon 6-6
- Sheer Force: over 100 lbs.
- Stackable 1/2" spacer for face frame cabinets



### Drawer Slide Installation Steps

Attach the spacers to the drawer slide with arrows pointing towards each other see below.

When sliding the drawer slide into place on the cabinet box make sure the front spacer locks in on the stopper button.



FRONT EDGE OF CABINET

